

Dot

Designer: Patrick Norguet
Year: 2015

Dot armchair embraces the symbolic values of the ideal home and turns them into soft curves, embracing geometries, tactile feelings and simple lines. Its project is characterized by a unique and continuous shape, with a curved backrest which gently becomes a structural element, while the padding gives stability and comfort to the seat, raised by a contrasting basement shape.

Developed by Tacchini in Italy

Dimensions (cm)

Cod. ODOT87

W 87 D 81 H 92 cm
H seat 42 cmNon-removable
coversCAD Files:
3D (.dwg, .3ds)
2D (.dwg)Download CAD
files at [tacchini.it/
en/downloads](http://tacchini.it/en/downloads)

Materials description

Internal frame: cold foam with metal inserts, feather seat cushion.

Base: metal powder-coated painted.

Metal base



T02
White



T03
Grey RAL 7016



T07
Black RAL 9011



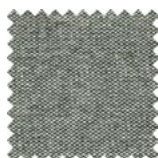
T61
Green RAL 6014

Wooden base

Suggested upholsteries



Bakul



Bryony



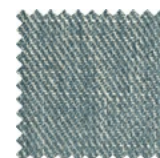
Calantha



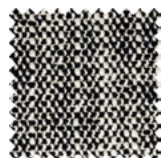
Calendula



Dianella



Dicentra



Elegia



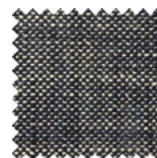
Euonymus



Lemon



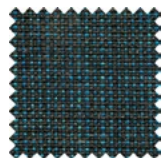
Lippia



Lorna



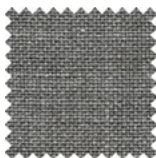
Schimmia



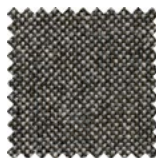
Sorbus



Steila



Thesium



Trifolium



Patrick Norguet

Patrick Norguet is a key figure in French design today, and was elected “furniture designer of the year” by Wallpaper magazine in 2009. He began his career as a project designer in the late nineties, working with numerous big names in the furniture design world, in addition to completing a number of interior and set design projects. He has always sought to select the right shapes and colours, exuding a love of innovative industrial processes, artisanal ateliers and the people working there.

Other products by Patrick Norguet:
Atoll, Jacket.

Tacchini Projects:



Okko Hotel
Grenoble
(Grenoble, France)



Okko Hotel
Strasbourg
(Strasbourg, France)



Okko Hotel
Paris
(Paris, France)