

Tacchini Review  
Milan Design Week 2018

# Tacchini

# Review







## Tacchini Review

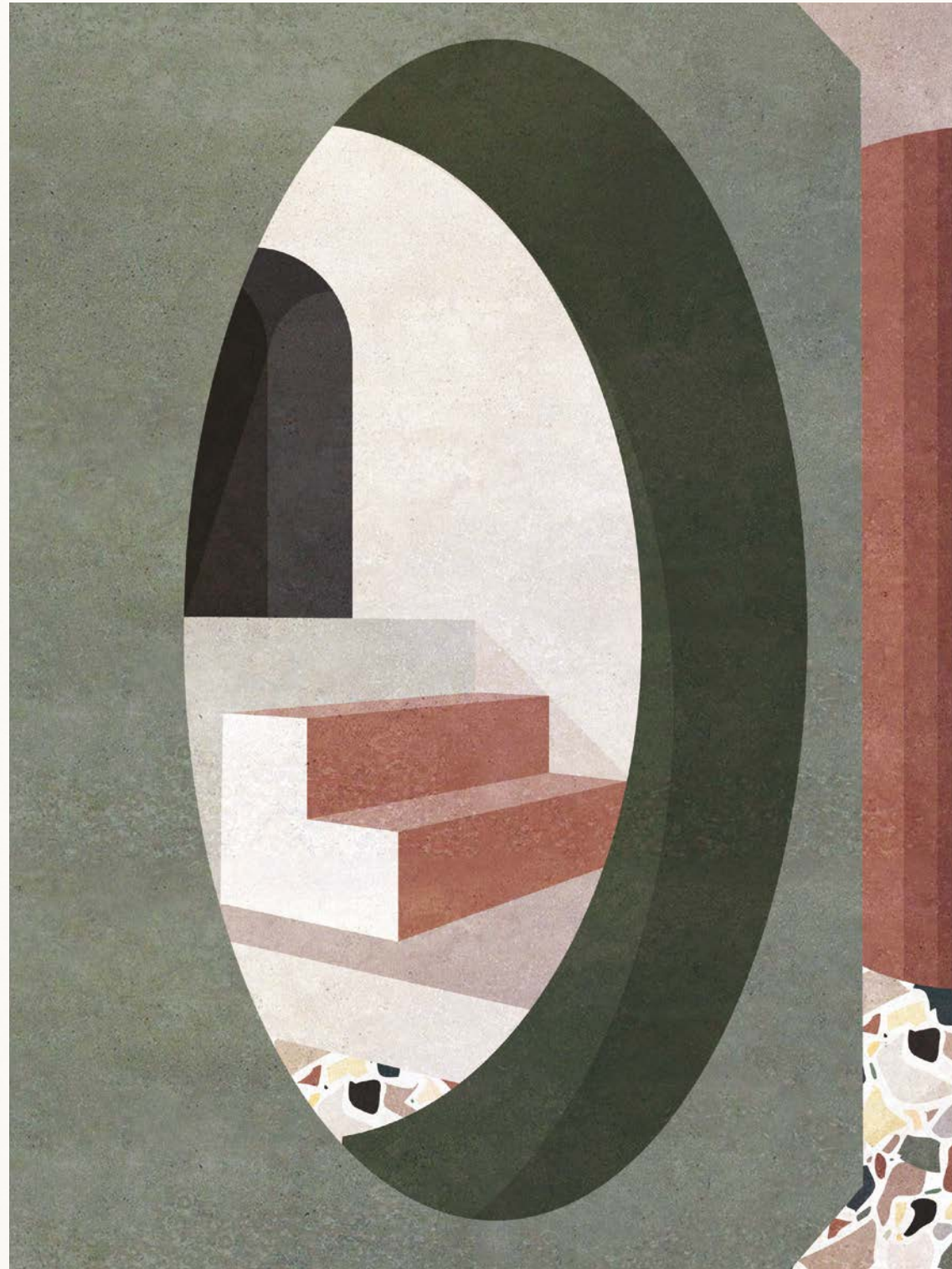
Le nuove collezioni Tacchini Italia per il Salone del Mobile 2018 hanno lo scopo di trasformare ogni spazio in un luogo accogliente, dove sia un piacere trascorrere il tempo. Anche quest'anno, l'azienda non ha voluto rinunciare ai grandi nomi del design e, con la qualità e l'attenta ricerca che la contraddistinguono, ha sviluppato soluzioni adatte sia agli ambienti domestici che al contract. Tra le novità della collezione 2018 Tacchini Italia ci sono la sedia Memory Lane di Christophe Pillet e la famiglia di imbottiti Julep di Jonas Wagell. A questa collezione si aggiunge la riedizione di Tacchini della Poltrona 831 di Gianfranco Frattini, la poltrona Lina.

(Eng) Tacchini Italia new collection for the Salone del Mobile 2018, has the aim of transforming every space into a comfortable place, where it is a pleasure to spend time. Again this year, the company didn't want to give up on its collaborations with the world's leading designers and, presenting the same high quality and research that distinguishes Tacchini from the other furnishing companies, it has developed solutions suitable for both domestic and contract markets. Among the novelties of the Tacchini Italia 2018 Collection is Memory Lane by Christophe Pillet and the upholstered family of sofas Julep, designed by Jonas Wagell. Additionally, as part of this collection is the re-edition of the Tacchini 831 armchair by designer Gianfranco Frattini, named Lina.



## Tacchini Edizioni

Tacchini Edizioni è il progetto del Gruppo Tacchini dedicato alla produzione di accessori e complementi d'arredo. Quest'anno Tacchini Edizioni si arricchisce con una collezione meno classica e più sperimentale, destinata a stupire sia dal punto di vista tecnico che di concept. Anche la collezione di Tacchini Edizioni si ispira alle memorie del passato rimettendo in produzione pezzi unici e storici come la ceramica italiana degli anni '50 e i tappeti realizzati a mano in Nepal ispirati ai dipinti di Umberto Riva, un maestro del design e dell'architettura contemporanea, proposto in un'inedita veste artistica.



INTERIORS AND EXTERIORS by Charlotte Taylor

(Eng) Tacchini Edizioni is the Tacchini Group project dedicated to the production of accessories and furnishing accessories. This year's Tacchini Edizioni is less classic and more experimental, destined to amaze both from a technical and conceptual point of view. Memories from the past inspire Tacchini Edizioni by putting into production unique and historical pieces, such as the Italian ceramics of the Fifties and the hand-knotted rugs produced in Nepal and inspired by Umberto Riva's paintings, a master of contemporary design and architecture who is presented this time in an artistic and unprecedented role.



# Tacchini

# Review



INTERIORS AND EXTERIORS by Charlotte Taylor



6

*Julep* (cat. Sofa, Armchair) designed by Jonas Wagell (2018). Shown with: *Soap* (cat. Low Table), base T25 Matt Champagne Gold, top T31 White Calacatta Marble. *Bubble* and *Pi-Dou* (cat. Vase) designed by Alvino Bagni (2018), *Rituale* (cat. Rug) designed by Umberto Riva (2018).



7

*Julep* (cat. Sofa, Armchair) designed by Jonas Wagell (2018). Shown with: *Soap* (cat. Low Table), base T25 Matt Champagne Gold, top T31 White Calacatta Marble. *Miss Pack* (cat. Lamp) designed by Alvino Bagni (2018), *Rituale* (cat. Rug) designed by Umberto Riva (2018).







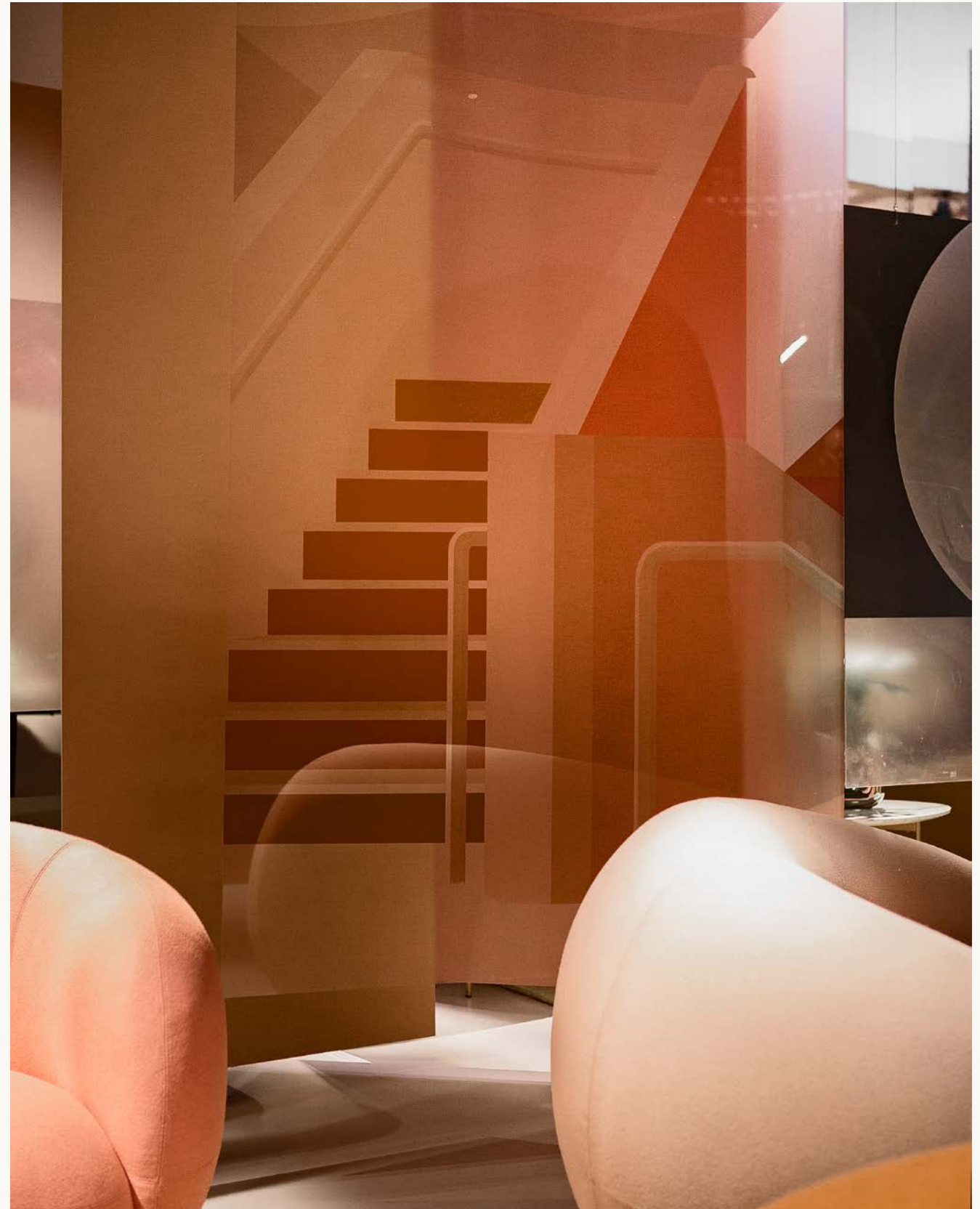




*Julep* (cat. Sofa, Armchair) designed by Jonas Wagell (2018). Shown with: *Soap* (cat. Low Table), base T25 Matt Champagne Gold, top T31 White Calacatta Marble. *Bubble* (cat. Vase) designed by Alvino Bagni (2018), *Rituale* (cat. Rug) designed by Umberto Riva (2018).



*Julep* (cat. Sofa, Armchair) designed by Jonas Wagell (2018). Shown with: *Soap* (cat. Low Table), base T25 Matt Champagne Gold, top T31 White Calacatta Marble. *Bubble* and *Pi-Dou* (cat. Vase) and *Miss Pack* (cat. Lamp) designed by Alvino Bagni (2018), *Rituale* (cat. Rug) designed by Umberto Riva (2018).







*Julep* (cat. Sofa, Armchair) designed by Jonas Wagell (2018). Shown with: *Soap* (cat. Low Table), base T25 Matt Champagne Gold, top T31 White Calacatta Marble. *Pi-Dou* (cat. Vase) designed by Alvino Bagni (2018).

*Julep* (cat. Sofa, Armchair) designed by Jonas Wagell (2018). Shown with: *Soap* (cat. Low Table), base T25 Matt Champagne Gold, top T31 White Calacatta Marble. *Bubble* (cat. Vase) designed by Alvino Bagni (2018), *Rituale* (cat. Rug) designed by Umberto Riva (2018).

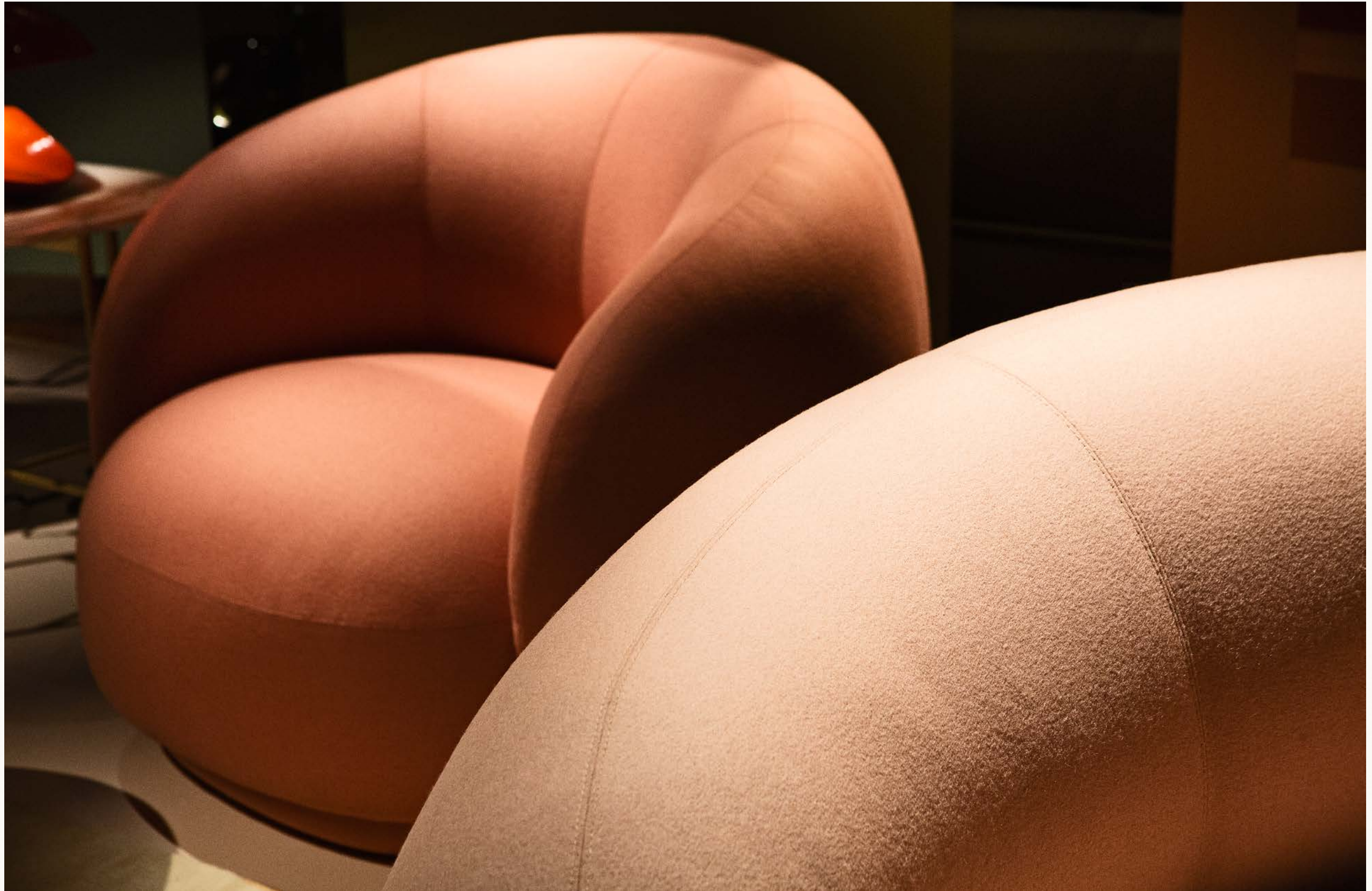




*Julep* (cat. Sofa, Armchair) designed by Jonas Wagell (2018). Shown with: *Soap* (cat. Low Table), base T25 Matt Champagne Gold, top T31 White Calacatta Marble. *Bubble* and *Pi-Dou* (cat. Vase) and *Miss Pack* (cat. Lamp) designed by Alvino Bagni (2018), *Rituale* (cat. Rug) designed by Umberto Riva (2018).





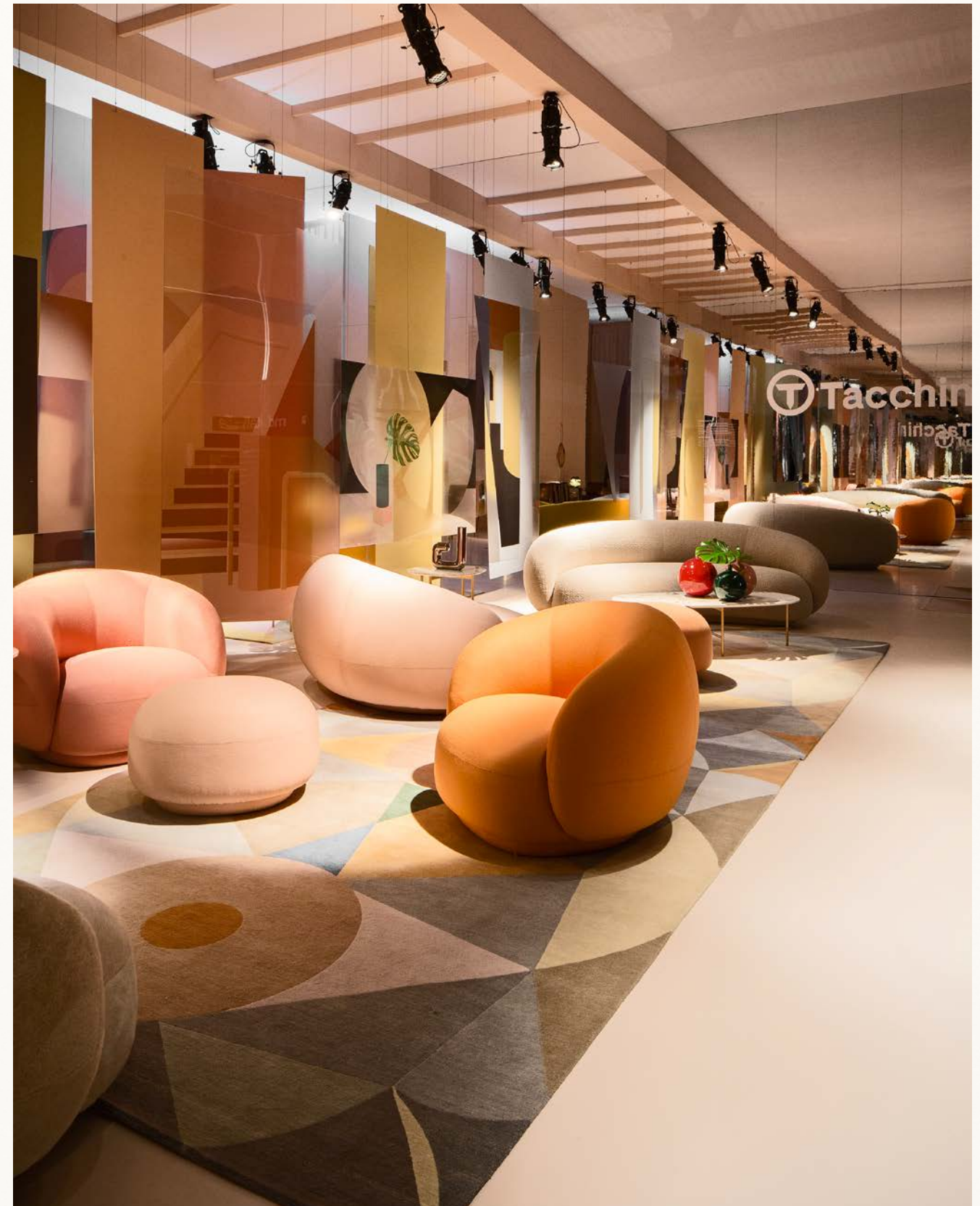


*Julep* (cat. Sofa, Armchair) designed  
by Jonas Wagell (2018).





*Julep* (cat. Sofa, Armchair) designed by Jonas Wagell (2018). Shown with: *Soap* (cat. Low Table), base T25 Matt Champagne Gold, top T31 White Calacatta Marble. *Bubble* and *Pi-Dou* (cat. Vase) and *Miss Pack* (cat. Lamp) designed by Alvino Bagni (2018), *Rituale* (cat. Rug) designed by Umberto Riva (2018).







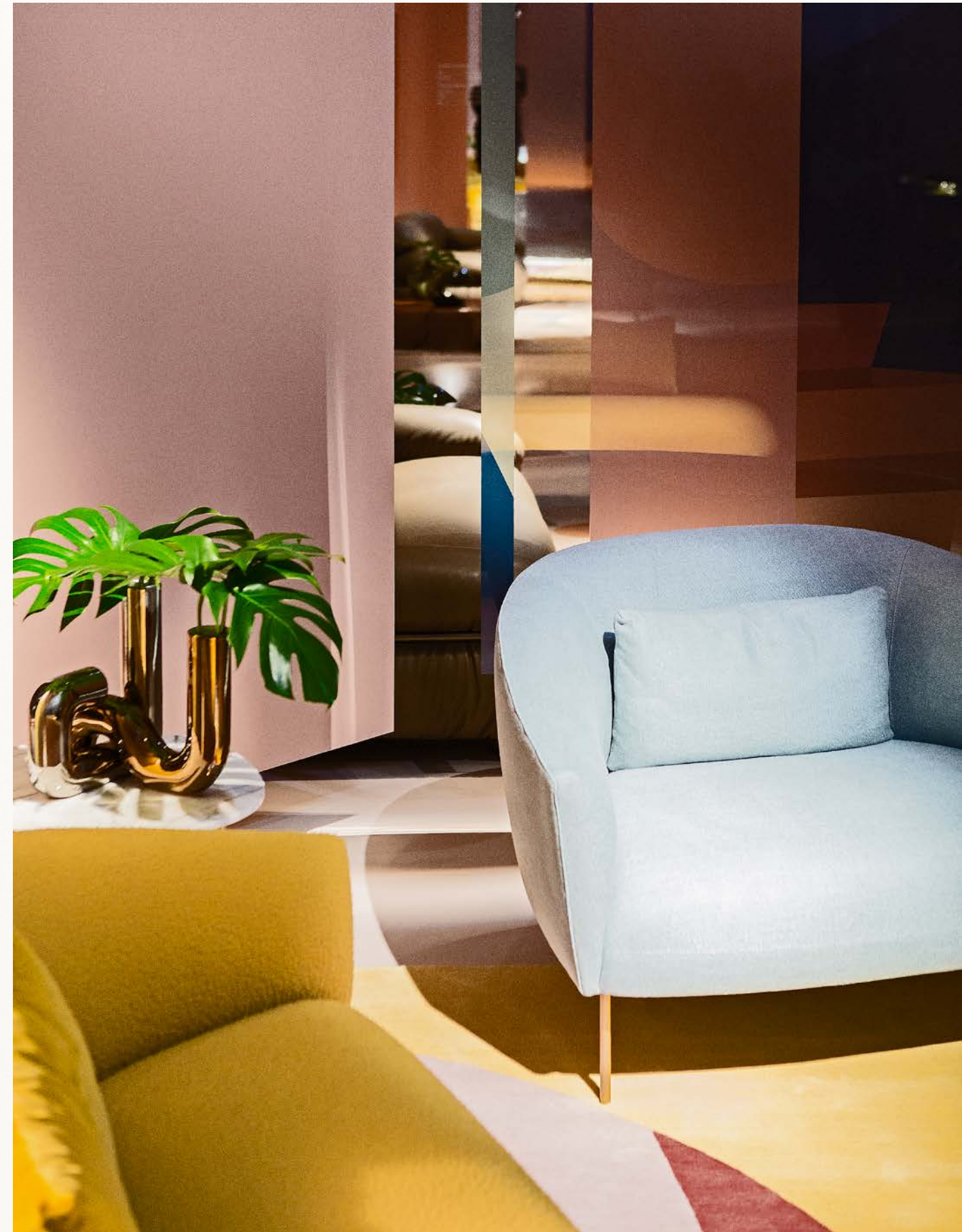
*Roma* (cat. Sofa, Armchair) designed by Jonas Wagell (2017), base T25 Matt Champagne Gold. Shown with: *Soap* (cat. Low Table), base T25 Matt Champagne Gold, top T31 White Calacatta Marble. *Pi-Dou* (cat. Vase) designed by Alvino Bagni (2018), *Nello Spazio* (cat. Rug) designed by Umberto Riva (2018).



*Roma* (cat. Sofa, Armchair) designed by Jonas Wagell (2017), base T25 Matt Champagne Gold. Shown with: *Soap* (cat. Low Table), base T25 Matt Champagne Gold, top T31 White Calacatta Marble.



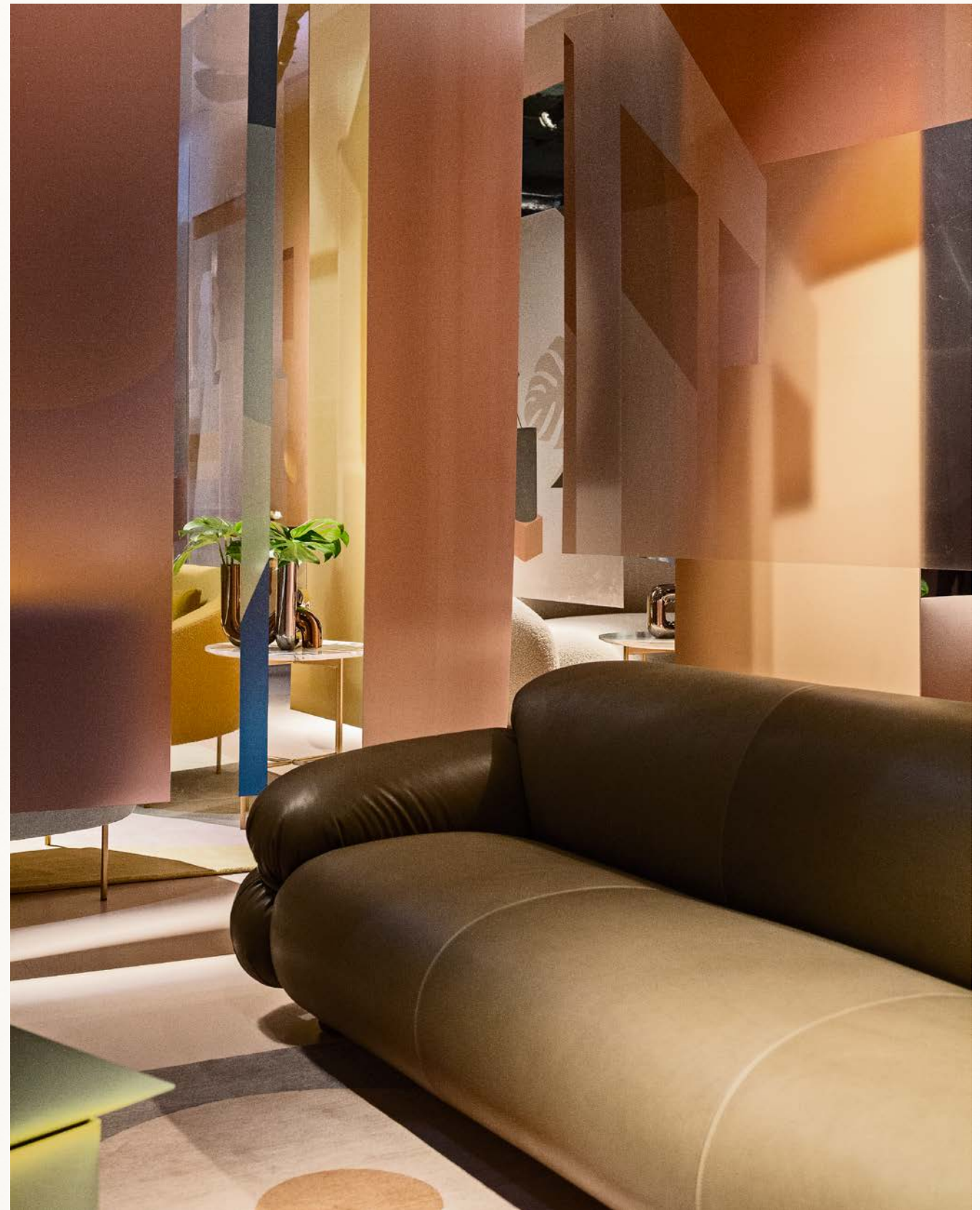
*Pi-Dou* (cat. Vase) designed by Alvino Bagni (2018), *Nello Spazio* (cat. Rug) designed by Umberto Riva (2018).





*Sesann* (cat. Sofa) designed by Gianfranco Frattini (1970), structure T28 Polished Black Chrome, feet T49 Grey. Shown with: *Lina* (cat. Armchair), base T43 Dark Walnut.

*Bubble* (cat. Vase) and *Miss Pack* (cat. Lamp) designed by Alvino Bagni (2018), *Daze* (cat. Low Table) designed by Truly Truly (2018), *Rituale* (cat. Rug) designed by Umberto Riva (2018).



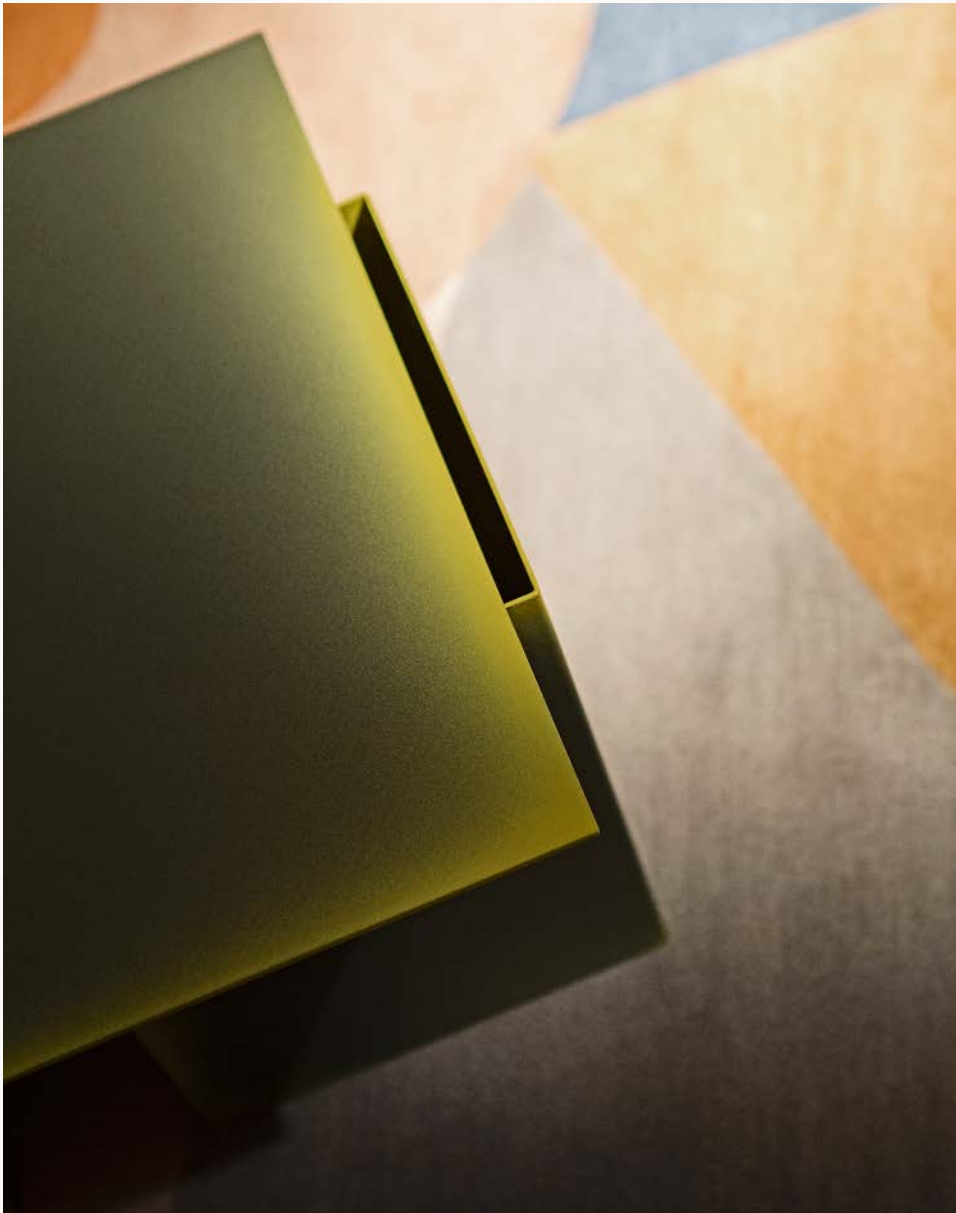


*Sesann* (cat. Sofa) designed by Gianfranco Frattini (1970), structure T28 Polished Black Chrome, feet T49 Grey. Shown with: *Lina* (cat. Armchair), base T43 Dark Walnut.

*Bubble* (cat. Vase) and *Miss Pack* (cat. Lamp) designed by Alvino Bagni (2018), *Daze* (cat. Low Table) designed by Truly Truly (2018), *Rituale* (cat. Rug) designed by Umberto Riva (2018).

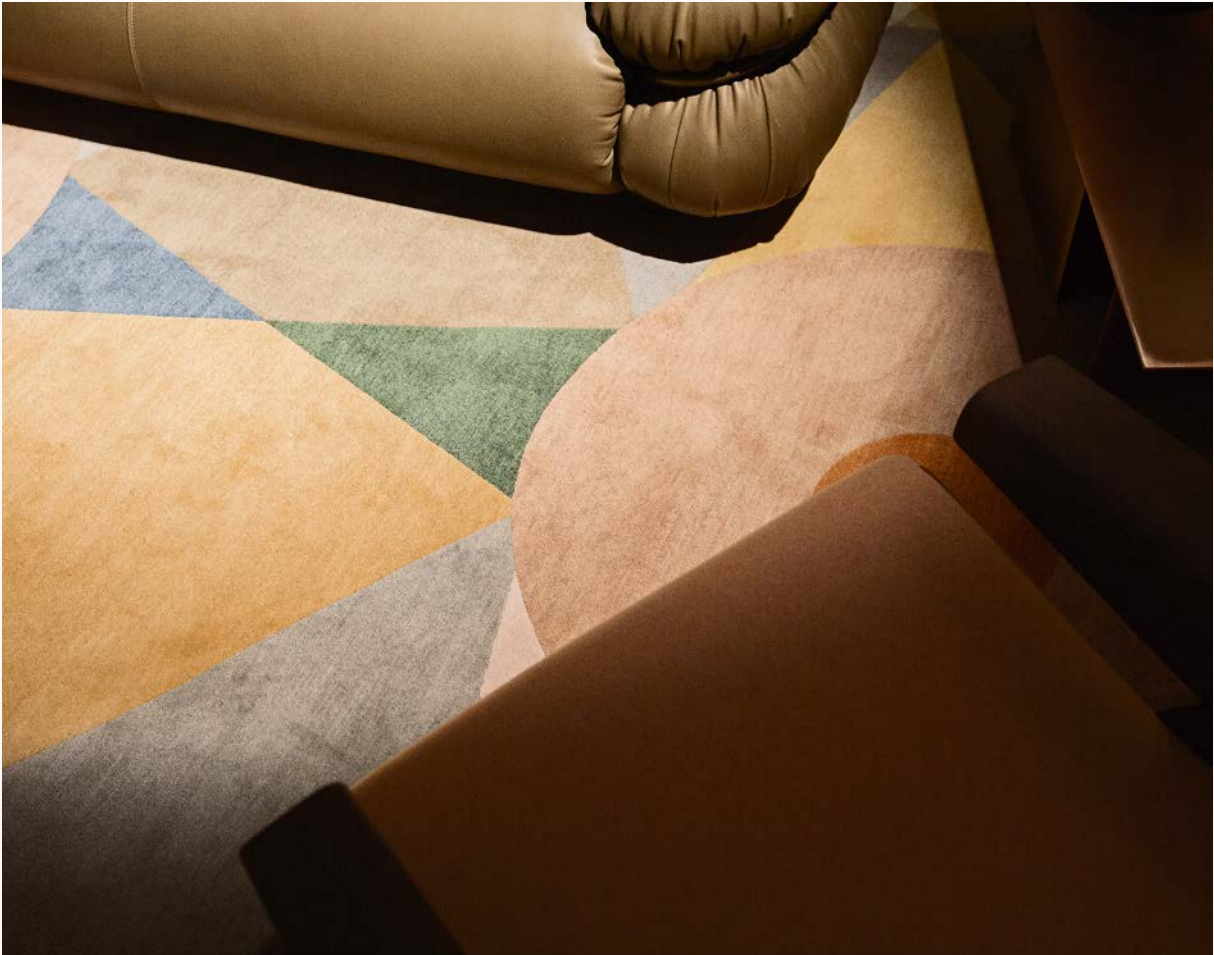






*Daze* (cat. Low Table) designed by Truly Truly (2018), *Rituale* (cat. Rug) designed by Umberto Riva (2018).

*Sesann* (cat. Sofa) designed by Gianfranco Frattini (1970), structure T28 Polished Black Chrome, feet T49 Grey. Shown with: *Lina* (cat. Armchair), base T43 Dark Walnut. *Daze* (cat. Low Table) designed by Truly Truly (2018), *Rituale* (cat. Rug) designed by Umberto Riva (2018).





*Sesann* (cat. Sofa) designed by Gianfranco Frattini (1970), structure T28 Polished Black Chrome, feet T49 Grey. Shown with: *Lina* (cat. Armchair), base T43 Dark Walnut.

*Bubble* (cat. Vase) and *Miss Pack* (cat. Lamp) designed by Alvino Bagni (2018), *Daze* (cat. Low Table) designed by Truly Truly (2018), *Rituale* (cat. Rug) designed by Umberto Riva (2018).





*Memory Lane* (cat. Chair) designed by Christophe Pillet (2018), base Bronze/Green. Shown with: *Split* (cat. Low Table), base T07 Black, top T33 Black Matt Travertine Marble. *Soleil* (cat. Mirror) designed by Giorgio Bonaguro, *Miss Pack* (cat. Lamp) designed by Alvino Bagni.





*Soleil* (cat. Mirror) designed by Giorgio Bonaguro.



*Memory Lane* (cat. Chair) designed by Christophe Pillet (2018), base Bronze/Green. Shown with: *Split* (cat. Low Table), base T07 Black, top T33 Black Matt Travertine Marble. *Soleil* (cat. Mirror) designed by Giorgio Bonaguro, *Miss Pack* (cat. Lamp) designed by Alvino Bagni.





*Memory Lane* (cat. Chair) designed by Christophe Pillet (2018), base Bronze/Green. Shown with: *Split* (cat. Low Table), base T07 Black, top T33 Black Matt Travertine Marble. *Soleil* (cat. Mirror) designed by Giorgio Bonaguro, *Miss Pack* (cat. Lamp) designed by Alvino Bagni.



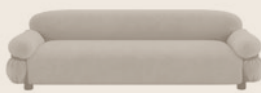
Review Milan Design Week 2018  
Tacchini New Collection



Julep (cat. Sofa)  
designed by Jonas Wagell



Roma (cat. Sofa)  
designed by Jonas Wagell



Sesann (cat. Sofa)  
designed by Gianfranco Frattini



Julep (cat. Armchair)  
designed by Jonas Wagell



Roma (cat. Armchair)  
designed by Jonas Wagell



Sesann (cat. Armchair)  
designed by Gianfranco Frattini



Lina (cat. Armchair)  
designed by Gianfranco Frattini



Memory Lane (cat. Chair)  
designed by Christophe Pillet

Tacchini Edizioni New Collection



Nello Spazio (cat. Rug)  
designed by Umberto Riva



Rituale (cat. Rug)  
designed by Umberto Riva



Soleil (cat. Mirror)  
designed by Giorgio Bonaguro



Jak (cat. Desk)  
designed by Giorgio Bonaguro



Daze (cat. Low Table)  
designed by Truly Truly



Miss Pack (cat. Lamp)  
designed by Alvino Bagni



Bubble (cat. Desk)  
designed by Alvino Bagni



Pi-Dou (cat. Desk)  
designed by Alvino Bagni



Tacchini Review  
Milan Design Week  
Edition May 2018  
© Tacchini Italia Forniture Srl

Exhibition project:  
Maria Gabriella Zecca

Photography:  
Federico Marin

Illustrations:  
Charlotte Taylor

Graphic design project:  
Think Work Observe

Press Office Italy  
Luisa Bertoldo Press Office  
T. +39 02 26 68 87 11  
pressoffice@luisabertoldo.com

Ufficio Stampa UK, France,  
Germany, Austria, Switzerland  
Stefania Evans  
T. +44 (0) 783 73 75 891  
stefaniaevans@outlook.com

Tacchini Italia Forniture Srl

19, via Domodossola  
20822 Baruccana di Seveso  
(Monza Brianza) Italy  
T: +39 0362 504182  
F: +39 0362 552402  
E-mail: info@tacchini.it  
www.tacchini.it



Tacchini is a philosophy. Behind every object there is a story and behind every story there is a person. We fall in love with our products, their stories and the stories of those who have produced them, and continue to make things by hand — so that this story continues, is passed on by the designer to the creator, and from the creator to the future owner of the product. And then, it continues further.







